

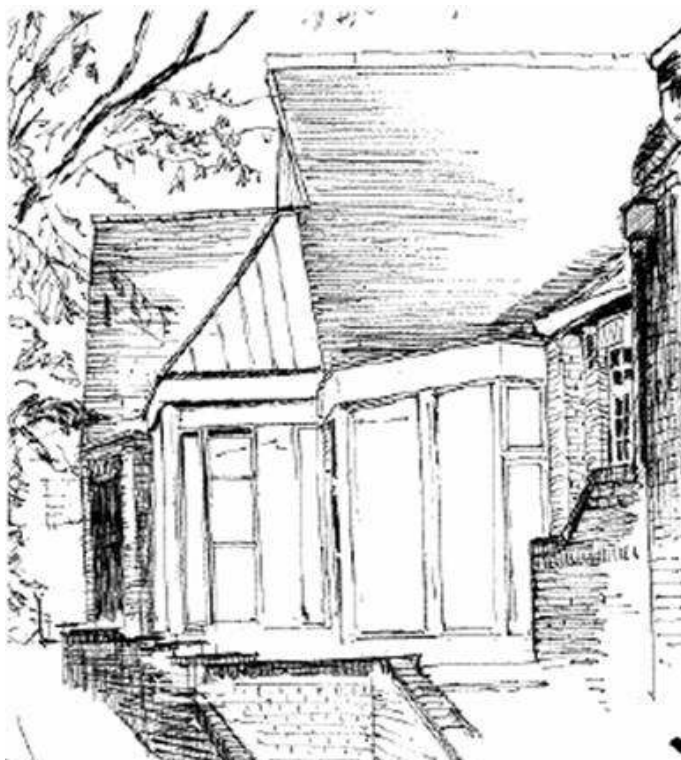
October - November 2011

Issue 139



# St Gabriel Greystones

*making Jesus known today*



THIS WILL BE THE LAST PRINTED ISSUE OF ST GABRIEL'S MAGAZINE.  
IN FUTURE ALL DETAILS OF OUR SERVICES AND ARTICLES WILL BE ON THE  
WEBSITE [www.saintgs.co.uk](http://www.saintgs.co.uk)  
PAPER FLYERS WILL BE AVAILABLE AT THE BACK OF CHURCH ALONG WITH  
OTHER INTERESTING PUBLICATIONS TO INSPIRE A CONTEMPORARY  
COMMUNITY.

# Church and Community News

## **Holiday Club**

A big thank you to all those who helped at the Holiday Club this year which was a wonderful success with plenty of children and lots of new families that we are now in contact with. We had excellent weather when we needed it for “water day” and also for the BBQ. Thank you to all those who helped and supported us with your prayers.

## **G.R.A.C.E.**

The “Grace” course will be starting again in the autumn and will fit with a joint initiative with some other churches that will be answering the most common questions that people have about the Christian faith. This will take place in the week 31<sup>st</sup> October - 4<sup>th</sup> November with the most ‘popular’ question being answered on Sunday 6<sup>th</sup> November in Church at “First”. The GRACE course then starts the

following week on Tuesday 8<sup>th</sup> November in the Upper Room at 7.45pm. Anyone with questions about the faith are welcome.

## **Big Sing**

John Bell of the Iona community will be leading a session on Music and Mission with a Big Sing on Sunday 2<sup>nd</sup> October 3-5pm at the Victoria Hall and organised by the Churches Together in South Yorkshire. All welcome.

## **Greystones School**

Please continue to pray for Greystones School over the next few weeks as the Governing body look to appoint a new Headteacher. Hopefully there will be plenty of applicants to choose from. Interviews are at the beginning of November and if successful, a new Head could start after Easter.

## Harvest

This year Harvest will be celebrated on the first Sunday in October with a Harvest celebration service at 10am. Instead of bringing fruit and vegetables, please bring some money to aid farmers and villagers in developing countries.

We support projects abroad through Christian Aid or TEARfund, as we have done in previous years - such as buying some goats for a farmer, or providing a pipe and tap for fresh water for a village, and so on.

*Pedr*

## Magazine

### Printed by

St Gabriel's Parish Newsletter is printed, collated, folded and stapled by Sharon Press, Christian Print Centre, 168 Crook Street, Bolton, Lancashire BL3 6AS. Tel/Fax: 01204398776

---

## How to find St Gabriel's Church

The church building is situated at the bottom of Dobbin Hill, Greystones, Sheffield, S11 7JB. Turn off the Ecclesall Road up Greystones Road. Dobbin Hill is the 4th turning on the left and the Church is 50m up on the right hand side.

### Contact the vicar

Rev. Pedr Beckley on 0114 2667686 or by e-mail  
[Pedr.Beckley@sheffield.anglican.org](mailto:Pedr.Beckley@sheffield.anglican.org)

## Louie Townsend

Louie was born in Mansfield 93 years ago and after moving several times ended up in Sheffield. She met Len when she worked in the London area and they married soon after, and just before war was declared, with Len soon receiving his call-up papers. After the war they settled back into Sheffield and had two daughters; Judy and Christine. Both daughters moved away - one south and the other north to Scotland. Christine and Brian



produced a grandson Stuart who became the joy of Louie's life and every picture possible of him from birth to his teens playing table tennis adorned the walls of every room in her house.

Louie was very upset when it was discovered that Christine had terminal cancer and she went north to Scotland to help where she could as Christine slowly lost the battle with her cancer. Sadly a double blow came when it was discovered that Judy also had cancer and when she died in July, Louie took it badly and quietly slipped away just hours after receiving the news of her second

daughters death. She held on until that last news and then quietly gave up her life that had been filled with so much over many years.

Louie had been a long time member of St. Gabriel's from soon after the war and had played a prominent part in the "Young Wives" and eventually the "Women's Fellowship". In 1983, with Len she was able to start the

St. Gabriel's Dance Club which was extremely successful and many of the great friends that she made there came to her funeral on 5th August. Louie was a delightful appreciative lady with a lovely sense of humour. She played a great role in the life of St. Gabriel's contributing in many ways and for the last few years had regularly helped administer one of the chalices at Holy Communion, a task that she took great joy in doing.

We shall all miss her with her simple faith and warmth of heart, her generosity and her appreciativeness.

*Pedr Beckley*

---

At the beginning of August, many of us from St. Gabriel's paid our respects to Louie Townsend at the end of her life, the last of the Townsend family in Sheffield. So came to an end an association with a family that loved and was loved and respected by all who knew them. We are honoured to have known them.

Jack and I were welcomed by Len and Louie when we first came to Sheffield in 1965. Both were active members of the church, Len on the PCC and Louie in the Women's Fellowship and generous with their time for others. Judith was a Sunday School teacher and being a gifted dancer, with Louie's support started the Dancing Club which has grown over the years.

Louie was devoted to her family and their welfare, caring for her mother Mrs Tinker in her later years when she became blind. She bore with great faith and courage the pain that only a mother knows as she watched and supported first Christine and then Judith succumb to cancer. At the end, her task as a mother completed, it was as though she asked her Saviour to take her home, and her request was granted.

We who are left can thank our Heavenly Father for the privilege of having known the Townsend family.

*Gillian Cartledge*

*THE WEST END FUNERAL HOME*

**WOOD  
FUNERAL  
SERVICE**

848 ECCLESALL ROAD

Phone: (0114) 266 1244



*DAY AND NIGHT*

*ADVICE, ASSISTANCE AND UNDERSTANDING*

*AT A TIME OF NEED*

**Is your loved ones grave looking  
weathered and in need of a clean or repair?**



**Willow  
Memorial  
Care  
Services**

Tel: 0114 221 4204

Mobile: 0776 284 8771



Headstones, Vases, Kerbs and Urns cleaned on site.  
Grave Maintenance, Re-Turfing, Grass Cutting  
and Chippings Replaced.

Remembrance and Seasonal Tributes  
Arranged and Delivered.

All work carried out quietly and efficiently.

***FULLY INSURED***

***CALL US FOR A  
FREE QUOTATION  
WITH NO OBLIGATION***

**Coffee Morning**  
**Saturday 15th October**  
**10am - 1.30pm**

**St Gabriel's Church Hall, Dobbin Hill**



**In Aid of David and Helen  
Smithers work through  
Interserve in Birmingham**

**and**



**St Luke's**  
The Sheffield Hospice

**St Luke's  
Hospice**

Many Stalls including

**Cakes - Preserves - Gifts - Books**

also

**Refreshments**

light lunches - tea - coffee - fruit drinks

## Services in October 2011

<b>Sun 2</b>	<b>Fifteenth Sunday After Trinity and Harvest</b>	10-11.00am ~ <i>First</i> †	6-7pm ~ Holy Communion
<b>Sun 9</b>	<b>Sixteenth Sunday After Trinity</b>	10-11.10am ~ Holy Communion	6-6.30pm ~ Compline
<b>Sun 16</b>	<b>Seventeenth Sunday After Trinity</b>	10-11.00am ~ Morning Prayer	5-6pm ~ C-Zone and ACfAP
<b>Sun 23</b>	<b>Eighteenth Sunday After Trinity</b>	10-11.10am ~ Holy Communion	6-6.45pm ~ Meditation
<b>Sun 30</b>	<b>Fourth Sunday Before Advent</b>	10-11.00am ~ Morning Prayer	6-7pm ~ Holy Communion

## Services in November 2011

<b>Sun 6</b>	<b>Third Sunday Before Advent</b>	10-11.00am ~ <i>First</i> †	6-7pm ~ Holy Communion
<b>Sun 13</b>	<b>Second Sunday Before Advent</b>	10-11.10am ~ Holy Communion	6-6.30pm ~ Compline
<b>Sun 20</b>	<b>Christ the King</b>	10-11.00am ~ Morning Prayer	5-6pm ~ C-Zone and ACfAP
<b>Sun 27</b>	<b>Advent Sunday</b>	10-11.10am ~ Holy Communion	6-6.45pm ~ Meditation



*Need some peace and quiet?  
A 'time out' place  
to recharge the batteries?*

## Rivendell

a secret in the countryside on  
the outskirts of Pickering  
Informal retreat & holiday  
place for individuals,  
couples or groups of friends

For more information  
phone 01751 475047

or e-mail [awhiles@tiscali.co.uk](mailto:awhiles@tiscali.co.uk)

or Linda Chambers on 230 5193

Web: [www.rivendellbreaks.iowners.net](http://www.rivendellbreaks.iowners.net)

## Ian Atkinson

MSc BSc(Hons) MChS

### Podiatrist/Chiropodist

- HPC Registered
- Westfield/HSA approved
- Full range of podiatry care
- Biomechanics / orthoses provision
- Home visits by appointment

**54 Ecclesall Road South**

**Tel: (0114) 267 8716**

## PLAY AND LEARN WITH Ecclesall PRE-SCHOOL

Monday - Friday 9.15 am - 12.15 pm  
2 years 6 months - 5 years  
High adult to child ratio  
Phone 2360854 for waiting list  
or to arrange a visit



Experienced, caring and professional staff



Free nursery places for 3 and 4 year olds



Indoor and outdoor play



Good links with local infant schools



OFSTED inspected

**Room 2 Ecclesall Parish Halls Sheffield S11 7PP**

MEMBER OF PLA INSPECTED BY OFSTED  
REGISTERED CHARITY NUMBER 518997

## ECCLESALL THEATRE COMPANY

THE PARISH HALL  
RINGINGLOW ROAD  
SHEFFIELD S11 7PQ



**The Farnedale Avenue Housing  
Estate Townswomen's Guild**

**Dramatic Society's**

**Production Of Macbeth**

*A Comedy by*

**David McGillivray and Walter Zerlin Jnr**

**Directed by Graham Millar**

**15 - 19 November 2011**

**Uproarious comedy when everything will  
not be alright on the night.**

**For tickets, use the booking form  
at [www.ecclesalltheatre.com](http://www.ecclesalltheatre.com)**

## A Final Word ...

**My role as CaSS Development Worker has involved helping churches and other Christian groups to make all kinds of links with schools.**

CaSS is a charitable trust funded by churches and individuals around Sheffield and beyond - and an associate body of Scripture Union. The long term work started with me in 1985, but built on pioneering work by christian teachers in the grammar schools in the 1950s and 1960s.

The over-riding concern of CaSS is the well-being of the whole school community, as well as encouraging a christian presence in school and making Jesus known to children and young people. My role has evolved considerably over the years, but I've always been passionate about supporting teachers, praying for schools and churches exploring ways of serving schools.

I retired at the end of August and the CaSS trustees stepped down too, which raised some questions about the future. For the past couple of years a committed group has met monthly to pray and to seek God's way forward.



Around Christmas time they felt very strongly the work of CaSS *should* continue and an interim management group emerged. We now have new trustees, funding for the next year AND a new Links Adviser to continue and develop the work. I

have loved the job and am so grateful for the Lord's provision of all our needs over the years and delighted to hand over the work rather than wind it up!

THANK YOU St. Gabriel's so much for your faithful commitment to CaSS and for the financial support which we've greatly appreciated. Several church members have been individual financial supporters too which has been very encouraging for me. Thank you also for your prayer support in different ways and your sustained interest in the work over the years.

*Linda Chambers*

*CaSS Development Worker  
and Member of St. Gabriel's*

## Deluges and Rainbows

A few days ago, I got an email from an old friend. She was telling me about some very difficult things going on in her family – problems that had been going on for some time. She sounded desperate – said she hadn’t got the resources to cope with it any more. “Will this ever end?” she cried.

Then as a sort of afterthought, she had added “sorry to deluge”.



My heart went out to her, and I wondered how I could reply. But as I thought over what she’d said, I looked out of the window. To my surprise, there was a beautiful rainbow across the sky, above Hunter House Road. Yes, it had been raining, but the sun was now coming out.

Of course it made me think of Noah and the flood. When he

and his family were stuck in the ark, and the rain kept coming down, they must have wondered whether it would ever stop. And even when it had stopped, they had to wait a long time before the flood waters finally went down, and let them get out. It couldn’t have been easy for that family – cooped up in a smelly ark for so long. They probably got quite stressed and wondered whether they would ever get out again. But eventually, they did get out – the floods did not last forever. And our problems will not last forever, either. The rainbow I saw that day, reminded me of that. It felt like a gift from God, and I wrote back to my friend, and told her about it.

I am reminded of that wonderful hymn by George Mattheson:

O Love that will not let me go,  
I rest my weary soul in thee;  
I give thee back the life I owe,  
That in thine ocean depths its flow  
May richer, fuller be.

O light that followest all my way,  
I yield my flickering torch to thee;  
My heart restores its borrowed ray,  
That in thy sunshine's glow its day  
May brighter, fairer be.

O Joy that seekest me through pain,  
I cannot close my heart to thee;  
I trace the rainbow through the rain,  
And feel the promise is not vain,  
That morn shall tearless be.

O Cross that liftest up my head,  
I dare not ask to fly from thee;  
I lay in dust life's glory dead,  
And from the ground there  
blossoms red  
Life that shall endless be.

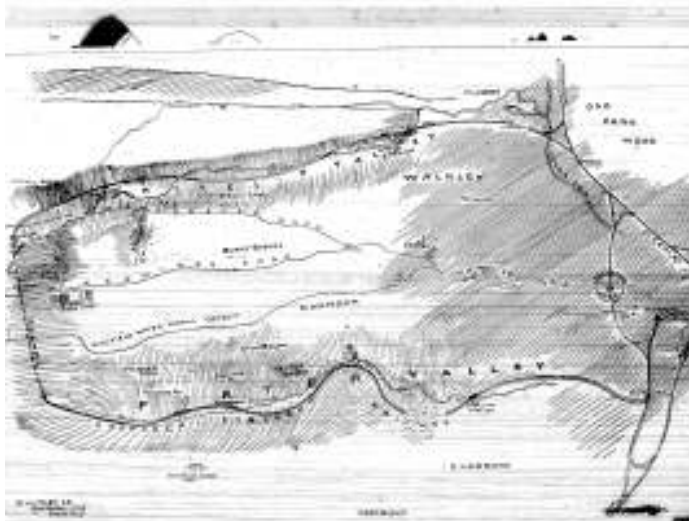
*Paula Smithers*



## The railway (nearly) comes to Endcliffe

In the 1890's, a local man felt that the city was badly served by the railway. (Plus Ça change?). He believed the Midland Station would serve the city better if it were moved to the area of Fitzalan Square.

Failing that a new station there, serving a suburban railway, for which he thought there was a growing need in the southwest, should be built and here's his proposed route.



From Fitzalan Square the line would be carried on an overhead viaduct to Brammall Lane, then up the Porter Valley with stations at Endcliffe and Fulwood, before following the Mayfield Brook and entering a tunnel to pass beneath Lodge Moor, to emerge in the Rivelin Valley.

Further stations would serve Stannington and Walkley/ Malin

Bridge, before following the Loxley to join the Manchester line at Neepsend and thus back to town.

Needless to say, nothing came of the idea, but as you stroll up our peaceful Porter Valley, try to imagine a railway line, with the odd tunnel here and there, all the way up to the top of the valley!

*Peter Bayliss*

# Parish Register

## Funerals

18 Jul	Lillian Margaret Ibbotson	aged 93
05 Aug	Florence Louie Townsend	Aged 93

## A Prayer for Autumn Days

God of the seasons, there is a time for everything; there is a time for dying and a time for rising. We need courage to enter into the transformation process

God of Autumn, the trees are saying goodbye to their green, letting go of what has been. We, too have our moments of surrender, with all their security and risk. Help us to let go when we need to do so.

God of fallen leaves lying in coloured patterns on the ground, our lives have their own patterns. As we see the patterns of our own growth, may we learn from them

God of misty days and harvest moon nights, there is always the dimension of mystery and wonder in our lives. We always need to recognize your power-filled presence. May we gain strength from this.

God of harvest wagons and fields of ripened grain, many gifts of growth lie within the season of our surrender. We must wait for harvest in faith and hope. Grant us patience when we do not see the blessings

God of geese going south for another season, your wisdom enables us to know what needs to be left behind and what needs to be carried into the future. We yearn for insight and vision

God of flowers touched with frost and windows wearing white designs, may your love keep our hearts from growing cold in the empty seasons

God of life, you believe in us, you enrich us, you entrust us with the freedom to choose life. For all this we are grateful

Joyce Rupp 'May I have this dance' - Supplied by Sue James

## **Prayer for the community**

Father, may I not live as if the welfare of this community and the quality of its corporate life were none of my concern.

Keep me alert to what is happening around me.

Amen

### **These are the roads we shall be praying for in October and November**

02 October 2011	Marmion Road
09 October 2011	Dobbin Hill (in Parish)
16 October 2011	Blair Athol Road
23 October 2011	Greystones Road
30 October 2011	Bingham Park Road
06 November 2011	High Storrs Drive
13 November 2011	Psalter Lane (in Parish)
20 November 2011	Hunter House Road (in Parish)
27 November 2011	Glenalmond Road

The logo for WeightWatchers, featuring a stylized 'W' icon followed by the brand name in a bold, sans-serif font.

***Meet in St Gabriel's Church Hall  
Thursdays 6.00 - 7.00pm  
Come along and Join in our Success  
[www.weightwatchers.co.uk](http://www.weightwatchers.co.uk)***

# REGULAR HALL FUNCTIONS

Enquiries for Hall booking: Philip or Edna Sneath on 0114 268 4127

Monday	2-4pm	<b>D &amp; D Dance</b> Dawn Sayles 2463181/Dennis Dunn 2731601
Monday	5-8pm	<b>Tae Kwon Do</b> Graham Churchill 01302 561171
Tuesday	9.45-11.15am	<b>Childminders</b> Turn up to session for information
Tuesday	2-3pm	<b>Keep Fit</b> Michelle Staves 01433 650 720
Tuesday	6.15-7.30pm	<b>183 Brownies</b> Julie Armstrong 2360960
Tuesday	7.30-8.45	<b>184 Guides</b> Yvonne Scruby 01246 414311
Wednesday	10-12am	<b>Hobbytime</b> Clare Whiteley 2367535
Wednesday	6-8pm	<b>Martial Arts</b> Turn up to session for information
Thursday	10-12am	<b>Hobbytime</b> Clare Whiteley 2367535
Thursday	6-7pm	<b>Weight Watchers</b> Contact <a href="http://www.weightwatchers.co.uk">www.weightwatchers.co.uk</a>
Thursday	8.15-9.15pm	<b>Badminton</b> Turn up to session for information
Friday	9.45-11.15am	<b>Playmates (Term Time)</b> <i>Contact details will return when places are available</i>
Friday	7.30-10pm	<b>Dance with D &amp; D</b> Dawn Sayles 2463181/Dennis Dunn 2731601
3rd Saturday	7.30-10pm	<b>D &amp; D Dance</b> Dawn Sayles 2463181/Dennis Dunn 2731601

Please do not contact the hall managers for details of groups. Either turn up at the venue to speak with whoever is leading the group or use the contact details supplied next to each event to make enquiries.